

# BAKERY

<i>Bread</i> .....	72
<i>Pastry</i> .....	87
<i>Assorted Confectionery</i> .....	89



 *Love good food?  
Love Plassey Food.*

# BAKERY Ciabatta / Panini



**Ciabatta Rustica**  
**Weight/Quantity:** 100g  
**Case:** 100g X 90pce  
**Code:** **74695**



**Deli Delicious Large Ciabatta**  
**Weight/Quantity:** 110g  
**Case:** 110g X 32pce  
**Code:** **959015**



**Deli Delicious Maize Sub Roll**  
**Weight/Quantity :** 12"  
**Case:** 12" X 28pce  
**Code:** **959014**



**Stafford's White Ciabatta**  
**Weight/Quantity:** 120g  
**Case:** 120g X 60pce  
**Code:** **7212**



**Deli Delicious Large Panini**  
**Weight/Quantity:** 110g  
**Case:** 110g X 32pce  
**Code:** **959021**



**Grill Marked Panini**  
**Weight/Quantity:** 100g  
**Case:** 100g X 70pce  
**Code:** **18130**



**Catering Panini**  
**Weight/Quantity:** 115g  
**Case:** 115g X 72pce  
**Code:** **7161**



**Sesame & Nigella Panini**  
**Weight/Quantity:** 130g  
**Case:** 130g X 18pce  
**Code:** **28100**





## Stafford's Bakeries

Stafford's is a family run bakery based in Gorey, Co. Wexford, founded over sixty years ago. We pride ourselves on making the best Bread, Cakes and Confectionary for our Customers. Stafford's Bakery provide a range of products for the retail and food service trade.

Using traditional methods within a modern bakery to provide great tasting products. Never rushing the a process we pride our business on "quality without compromise" allowing our breads to rest and our delicious cream cakes to be baked by eye and finished by hand.

Stafford's Bakery has received numerous awards over the years including Blas na hÉireann 5 Gold, 4 Silver and 3 Bronze awards in 2018.

From authentic Sourdough, Irish Soda Breads, Sliced Breads, Confectionary and Scones to a full selection Par Baked Bread, all products are produced by our Master Bakers in our BRC accredited purpose-built premises.



 *Love good food?  
Love Plassey Food.*

# BAKERY Bake Off



**Plassey Food Demi Baguette**  
**Weight/Quantity:** 135g  
**Case:** 135g X 70pce  
**Code:** **0310**



**Plassey Food Petit Pain**  
**Weight/Quantity:** 85g  
**Case:** 85g X 105pce  
**Code:** **PPLG**



**Plassey Food Petit Pain**  
**Weight/Quantity:** 55g  
**Case:** 55g X 160pce  
**Code:** **80008**



**Plassey Food Soup Rolls**  
**Weight/Quantity:** 35g  
**Case:** 35g X 216pce  
**Code:** **99861**



**Plassey Food Brown Demi Baguette**  
**Weight/Quantity:** 135g  
**Case:** 135g X 70pce  
**Code:** **0327**



**Plassey Food Brown Petit Pain**  
**Weight/Quantity :** 95g  
**Case:** 95g X 105pce  
**Code:** **00116**



**Plassey Food Brown Petit Pain**  
**Weight/Quantity:** 55g  
**Case:** 55g X 140pce  
**Code:** **0280**



**Triple Grain Demi Baguette**  
**Weight/Quantity:** 140g  
**Case:** 140g X 60pce  
**Code:** **7203**



**Hotel Select Mini Gourmet Rolls**  
**Weight/Quantity:** 40g  
**Case:** 40g X 216pce  
**Code:** **15601**



# BAKERY Various Breads



**Plassey Brown French Parisienne**  
**Weight/Quantity:** 440g  
**Case:** 440g X 20pce  
**Code:** **80128**



**Plassey Food French Parisienne**  
**Weight/Quantity:** 400g  
**Case:** 400g X 20pce  
**Code:** **99801020**



**Fully Baked Demi Baguette**  
**Weight/Quantity :** 120g  
**Case:** 120g X 72pce  
**Code:** **12070**



**Salad Roll**  
**Weight/Quantity:** 120g  
**Case:** 120g X 54pce  
**Code:** **7130**



**Sesame Seed Bagel**  
**Weight/Quantity:** 185g  
**Case:** 85g X 48pce  
**Code:** **4264**



**Plain Bagels**  
**Weight/Quantity:** 100g  
**Case:** 100g X 48pce  
**Code:** **4884**



# BAKERY Bread



**Rosemary & Sea Salt Flatbread**  
**Weight/Quantity:** 400g  
**Case:** 400g X 12pce  
**Code:** **827408**



**Round Herb Focaccia Bread**  
**Weight/Quantity:** 100g  
**Case:** 100g X 50pce  
**Code:** **801**



**White Bloomer**  
**Weight/Quantity:** 900g  
**Case:** 900g X 6pce  
**Code:** **80103**



**Sunflower & Honey Loaf**  
**Weight/Quantity:** 500g  
**Case:** 500g X 18pce  
**Code:** **3265**



**Staffords Sourdough Loaf**  
**Weight/Quantity:** 400g  
**Case:** 400g X 8pce  
**Code:** **1819**



**Mixed Vienna Loaf**  
**Weight/Quantity:** 400g  
**Case:** 400g X 8pce  
**Code:** **80038**



# BAKERY Bread



**Gluten Free Brown Loaf**  
**Weight/Quantity:** 400g  
**Case:** 400g X 6pce  
**Code:** **7181**



**Gluten Free White Loaf**  
**Weight/Quantity:** 400g  
**Case:** 400g X 6pce  
**Code:** **7144**



**Farmhouse Sliced Wheaten Loaf**  
**Weight/Quantity:** 440g  
**Case:** 440g X 12pce  
**Code:** **42011**



**Farmhouse Soda Bread**  
**Weight/Quantity:** 440g  
**Case:** 440g X 20pce  
**Code:** **41011**



**Wheaten Bannocks**  
**Weight/Quantity:** 420g  
**Case:** 420g X 18pce  
**Code:** **3010**



**Kearney's Gluten Free Sliced Brown Bread**  
**Weight/Quantity:**  
**Case:** 2pk x 28  
**Code:** **2580**





**Kearney's**  
HOME BAKING



## Kearney's Homebaking Ltd.

The Kearneys' Homebaking mission is to maintain the highest standards of flavour and quality using traditional processes in a clean, productive work environment.

We are privileged to have access to the freshest, most natural, nutritious ingredients. We are proud of our links with Irish businesses and continue to support the local economy while remaining modern and competitive as a brand. Customer feedback is vital to the success of our business, and we continually strive to improve and extend our product range. We aim to provide reliable and thorough service with a friendly smile.

### Award winning products:

- 2020 Blas Na hEireann Silver for Gluten Free Brown Bread.
- 2020 Merit award for Gluten Free Fruit Scone @ Free from Awards.
- 2020 Silver award for Gluten Free Bread @ Free from Awards.
- 2020 Special Judges award for Gluten Free Fruit Scones @ Free from Awards.
- 2021 Gold award for Gluten Free Brown Bread @ Free from Awards.



*Love good food?  
Love Plassey Food.*

# BAKERY Sliced / Pitta / Crumbs



**Catering Sliced White Pan**  
**Weight/Quantity:** 750g  
**Case:** 750g X 15pce  
**Code:** 1281



**Thick Toast Sliced White Pan**  
**Weight/Quantity:** 750g  
**Case:** 750g X 15pce  
**Code:** 1280



**Catering Sliced Brown Pan**  
**Weight/Quantity:** 750g  
**Case:** 750g X 15pce  
**Code:** 1283



**Thick Toast Sliced Brown Pan**  
**Weight/Quantity:** 750g  
**Case:** 750g X 15pce  
**Code:** 1282



**Large Sliced Batch Loaf**  
**Weight/Quantity:** 800g  
**Case:** 800g X 12pce  
**Code:** 1284



**Garlic Bread Slices**  
**Weight/Quantity:** 30g  
**Case:** 30g X 108pce  
**Code:** 5241



**Nina Bakery Large Pitta Bread 15cm**  
**Weight/Quantity:** 100g  
**Case:** 100g X 50pce  
**Code:** 80641



**White Bread Crumbs**  
**Weight/Quantity:** 15lbs  
**Case:** 1pce  
**Code:** 716811



Looking for a specific product!



Call our Sales Team  
on (069) 63500

[www.plasseyfood.ie](http://www.plasseyfood.ie)

 *Love good food? Love Plassey Food.*

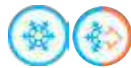
# BAKERY Baps / Rolls



**Walsh's Bakehouse Large Blaa**  
Weight/Quantity: 75g  
Case: 75g X 80pce  
Code: **80031**



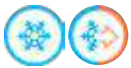
**Walsh's Bakehouse Traditional Blaa**  
Weight/Quantity: 55g  
Case: 55g X 100pce  
Code: **8006**



**Walsh's Bakehouse Floursy Blaa-Guette**  
Weight/Quantity: 80g  
Case: 80g X 60pce  
Code: **8005**



**Onion Oval Bap**  
Weight/Quantity: 85g  
Case: 85g X 48pce  
Code: **1663**



**Staffords Batch Crusty Rolls**  
Weight/Quantity: 80g  
Case: 80g X 96pce  
Code: **7012**



**Mixed Baps**  
Weight/Quantity: 75g  
Case: 75g X 60pce  
Code: **100048**



**Americana Floursy Baps 5"**  
Weight/Quantity: 85g  
Case: 85g X 48pce  
Code: **80035**





## Walsh's Bakehouse – Home of the Waterford Blaa

Walsh's Bakehouse is a family-run bakery located in the heart of Waterford City. Founded by their grandfather in 1921, the bakery has been run since 1985 by brothers Michael and Dermot Walsh who are third generation bakers in the Walsh family.

The company bakes a range of bread products for the retail and food service trade in the Southeast providing a variety of traditional bakery products from blaas, turnovers, brown and white sliced and a range of morning goods.

Walsh's Bakehouse has received numerous awards over the years including a Blas na hÉireann gold award in 2012 for the Waterford Blaa. The Waterford Blaa is the centre of its' repertoire and is an indigenous food in the Waterford area.

The Blaa received the PGI (Protected Geographical Indication) in 2013 from The European Commission which means that it can only be produced in Waterford and Southeast Kilkenny.

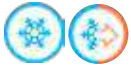


*Love good food?  
Love Plassey Food.*

# BAKERY Buns



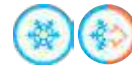
**Coghlan's Bakery Mini Brioche Slider**  
**Weight/Quantity:** 24g  
**Case:** 24g X 120pce  
**Code:** **1320**



**Coghlan's Brioche Burger Bun**  
**Weight/Quantity:** 4"  
**Case:** 4" X 48pce  
**Code:** **1212**



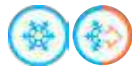
**Deli Delicious Brioche Bun**  
**Weight/Quantity :** 4.5"  
**Case:** 4.5" X 40pce  
**Code:** **959040**



**Americana Unseeded Burger Bun**  
**Weight/Quantity** 4"  
**Case:** 4" X 48pce  
**Code:** **1002**



**Americana Unseeded Burger Bun**  
**Weight/Quantity:** 4-5"  
**Case:** 4" X 48pce  
**Code:** **6076**





## Lantmännen Unibake / Bakehouse

### Americana The Brand

Americana has grown to become a leading brand within the foodservice sector for fast food breads. Lantmännen Unibake is part of the Lantmännen Group, owned by 27,000 Swedish farmers.

Lantmännen Unibake is the second largest bakery company in Europe, producing 585,000 tonnes of bakery products a year. It has 37 bakeries worldwide and is present in more than 20 countries.

### Why choose Americana?

The Americana range includes our classic and gourmet burger buns, hot dog rolls, deli rolls and baps. Our Americana buns, that are produced in our state of the art and halal accredited bakeries and are recognised as best in class.

All our classic buns are made using a traditional American sponge and dough method to give a distinctive flavour and texture.

All Americana products are supplied frozen and pre-sliced, meaning you can prepare and serve products as and when you need them, quickly and easily, with minimal wastage.



 *Love good food?  
Love Plassey Food.*

# BAKERY Buns



## Americana Seeded Burger Buns

**Weight/Quantity:** 4"  
**Case:** 4" X 48pce  
**Code:** 144



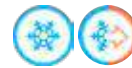
## Americana Seeded Burger Buns

**Weight/Quantity:** 4.5"  
**Case:** 4.5" X 48pce  
**Code:** 176



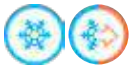
## Americana Seeded Burger Bun

**Weight/Quantity:** 5"  
**Case:** 5" X 48pce  
**Code:** 3625



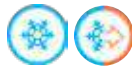
## Bundy's Double Decker Buns

**Weight/Quantity:** 4.5"  
**Case:** 4.5" X 24pce  
**Code:** 594



## Maize Topped Burger Buns

**Weight/Quantity:** 4.5"  
**Case:** 4.5" X 48pce  
**Code:** 598



## Deli Delicious Italian Soft Roll

**Weight/Quantity :** 5"  
**Case:** 5" X 54pce  
**Code:** 959022



## Bundy Seeded Rib Bun

**Weight/Quantity:** 5"  
**Case:** 5" X 48pce  
**Code:** 465



## Hot Dog Rolls

**Weight/Quantity:** 8.5"  
**Case:** 8.5" X 54pce  
**Code:** 31300



## English Breakfast Muffins

**Weight/Quantity:** 110g  
**Case:** 110g X 24pce  
**Code:** 5253



# BAKERY Wraps



**Salud Tortilla Wraps**  
**Weight/Quantity:** 10"  
**Case:** 10" X 144pce  
**Code:** **37125**



**Salud Tortilla Wraps**  
**Weight/Quantity:** 12"  
**Case:** 12" X 144pce  
**Code:** **3018**



**Deli Delicious Tortilla Wraps**  
**Weight/Quantity:** 12"  
**Case:** 12" X 108pce  
**Code:** **959028**



**Digger Multigrain Wrap**  
**Weight/Quantity :** 10"  
**Case:** 10" X 100pce  
**Code:** **37140**



**Diggers Tomato Wrap**  
**Weight/Quantity:** 10"  
**Case:** 10" X 100pce  
**Code:** **37135**

# BAKERY Pastry



**Golden Bake Filo Pastry Sheets**  
Weight/Quantity: 500g  
Case: 500g X 8pce  
Code: **31**



**Golden Bake Puff Pastry Sheet**  
Weight/Quantity: 625g  
Case: 625g X 16pce  
Code: **81038**



**King Size Vol Au Vent Cases**  
Weight/Quantity: 56g  
Case: 56g X 100pce  
Code: **30**



**Pidy Cooked Large Vol Au Vent**  
Weight/Quantity: 8cm  
Case: 8cm X 80pce  
Code: **68102082**



**Pidy Cooked Vol Au Vent**  
Weight/Quantity: 7cm  
Case: 7cm X 90pce  
Code: **67215093**



**Pidy Patisserie Bouchee**  
Weight/Quantity : 4.5cm  
Case: 4.5cm X 96pce  
Code: **21000096**

# BAKERY Ready to Fill Pastry



**Pidy Quiche Base & Aluminum**  
**Weight/Quantity:** 18cm  
**Case:** 18cm X 36pce  
**Code:** **77000036**



**Pidy Quiche Base**  
**Weight/Quantity:** 8.5cm  
**Case:** 8.5cm X 144pce  
**Code:** **75020148**



**Pidy Quiche Base**  
**Weight/Quantity:** 11cm  
**Case:** 11cm X 42pce  
**Code:** **76000042**



**Pidy Tartlet Sablee**  
**Weight/Quantity:** 28cm  
**Case:** 28cm X 10pce  
**Code:** **91046010**



**Pidy Tartlet Sablee**  
**Weight/Quantity:** 9.5cm  
**Case:** 9.5cm X 108pce  
**Code:** **90046010**



**Pidy Tartlet Sablee**  
**Weight/Quantity :** 11cm  
**Case:** 11cm X 72pce  
**Code:** **89546072**



**O'Keeffe's Bakery Fruit Scones**  
Weight/Quantity: 125g  
Case: 125g X 70pce  
Code: **0600**



**O'Keeffe's Bakery White Scones**  
Weight/Quantity: 125g  
Case: 125g X 70pce  
Code: **811006**



**O'Keeffe's Bakery Brown Scones**  
Weight/Quantity: 125g  
Case: 125g X 70pce  
Code: **811001**



**O'Keeffe's Bakery Raw Fruit Scone**  
Weight/Quantity: 150g  
Case: 150g X 60pce  
Code: **0617**



**O'Keeffe's Bakery Raw Brown Scone**  
Weight/Quantity: 150g  
Case: 150g X 60pce  
Code: **0631**



**O'Keeffe's Bakery Raw Scone**  
Weight/Quantity: 150g  
Case: 150g X 60pce  
Code: **0624**



**Kearneys Gluten Free Plain Scone**  
Weight/Quantity: 120g  
Case: 120g X 20pce  
Code: **1600**



**Kearneys Gluten Free Fruit Scone**  
Weight/Quantity: 120g  
Case: 120g X 20  
Code: **112233**





# O'Keeffe's

---

## Artisan Bakery

## O'Keeffe's Artisan Bakery

O'Keeffe's Bakery was established in 1984 and is a family run business now in it's 2nd generation – the bakery is based in Ballincollig, County Cork.

As we are an artisan bakery many of our products are produced by hand giving them a very rustic and authentic look and taste. Handmade breads, scones, donuts and par-baked breads are some of our more popular lines.

R&D and NPD are key drivers within our business helping us to constantly develop new ideas and new products for our customers.

We make every effort to source our ingredients in Ireland which helps us achieve very high quality products. All aspects of our production conform to an A Grade BRC Hygiene standard.



 *Love good food?  
Love Plassey Food.*

# BAKERY

# Assorted Confectionery



### Ring Donut

Weight/Quantity : 45g  
Case: 45g X 36pce  
Code: **021**



### O'Keeffe's Bakery Mixed Iced Donuts

Weight/Quantity: 55g  
Case: 55g X 36pce  
Code: **811003**



### O'Keeffe's Red Velvet Donuts

Weight/Quantity: 85g  
Case: 85g X 36pce  
Code: **025**



### O'Keeffe's Bakery Jam Ball Donut

Weight/Quantity: 55g  
Case: 55g X 60pce  
Code: **811004**



### O'Keeffe's Bakery Custard Ball Donut

Weight/Quantity: 55g  
Case: 55g X 60pce  
Code: **811005**



### O'Keeffe's Lemon Filled Donuts

Weight/Quantity: 85g  
Case: 85g X 36pce  
Code: **028**



### O'Keeffe's Caramel Filled Donuts

Weight/Quantity: 85g  
Case: 85g X 36pce  
Code: **029**



### O'Keeffe's Chocolate Hazelnut Donut

Weight/Quantity: 85g  
Case: 85g X 36pce  
Code: **026**



# BAKERY Assorted Confectionery/Pancakes



**Staffords Fresh Cream Donuts**  
**Weight/Quantity:** 80g  
**Case:** 80g X 15pce  
**Code:** **162003**



**Staffords Custard & Vanilla Slice**  
**Weight/Quantity:** 100g  
**Case:** 100g X 20pce  
**Code:** **4371**



**Dely Waffles**  
**Weight/Quantity:** 80g  
**Case:** 80g X 24pce  
**Code:** **1072**



**Lawa American Thick Style Pancakes**  
**Weight/Quantity:** 60g  
**Case:** 60g X 70pce  
**Code:** **0876**



**Lawa Crepe Pancakes**  
**Weight/Quantity:** 60g  
**Case:** 60g X 60pce  
**Code:** **0988**





## Lawa

*Great tasting pancakes – classic & American style.*

No breakfast without pancakes! Are you going American style: the loose-airy ones that are a little smaller and thicker than a classic pancake?

Superb with maple syrup, sugar, etc.  
Great taste and easy preparation!

- microwave: heat for about 2 minutes (600 watts).
- pan: heat pancakes with low fat over medium heat for 1 min.



*Love good food?  
Love Plassey Food.*

# BAKERY Assorted Confectionery



**Stafford Bakery Eclair Shells**  
**Weight/Quantity:** 60g  
**Case:** 60g X 24pce  
**Code:** **8000**



**Stafford Bakery Donut Shells**  
**Weight/Quantity:** 100g  
**Case:** 100g X 60pce  
**Code:** **7536**



**Individual French Eclairs**  
**Weight/Quantity :** 130g  
**Case:** 130g X 10ptn  
**Code:** **11582**



**American White Choc Chip Cookie**  
**Weight/Quantity:** 80g  
**Case:** 80g X 100pce  
**Code:** **01428**



**American Double Choc Cookie**  
**Weight/Quantity:** 80g  
**Case:** 80g X 100pce  
**Code:** **01429**



**Lava Cookie Caramel**  
**Weight/Quantity:** 80g  
**Case:** 55 pieces  
**Code:** **16666**



**Triple Chocolate Muffin**  
**Weight/Quantity:** 150g  
**Case:** 150g X 28pce  
**Code:** **42314**



**Wrapped Chocolate Muffin**  
**Weight/Quantity:** 102g  
**Case:** 102g X 48pce  
**Code:** **2323**



**Wrapped Blueberry Muffin**  
**Weight/Quantity:** 102g  
**Case:** 102g X 48pce  
**Code:** **2324**



# BAKERY Assorted Confectionery



**All Butter Croissant**  
Weight/Quantity: 70g  
Case: 70g X 50pce  
Code: **81031**



**Mini Croissant**  
Weight/Quantity: 30g  
Case: 30g X 120pce  
Code: **81032**



**Wrapped Jumbo Croissant**  
Weight/Quantity: 40g  
Case: 40g X 32pce  
Code: **74676**



**Maple Pecan Plait**  
Weight/Quantity: 95g  
Case: 95g X 48pce  
Code: **77955**



**Butter Pain au Raisin**  
Weight/Quantity: 96g  
Case: 96g X 60pce  
Code: **0846**



**Butter Pain au Chocolat**  
Weight/Quantity: 80g  
Case: 80g X 60pce  
Code: **2342**



**Stafford Small Pavlova Base**  
Weight/Quantity: 172g  
Case: 172g X 4pce  
Code: **80041**



**Meringue Nest**  
Weight/Quantity: 30g  
Case: 30g X 20pce  
Code: **5292**



# BAKERY Assorted Confectionery



**Mixed Danish Pastries**  
**Weight/Quantity:** 128g  
**Case:** 128g X 45pce  
**Code:** **81027**



**Mini Mixed Danish Pastries**  
**Weight/Quantity:** 30g  
**Case:** 30g X 144pce  
**Code:** **80525**



**Mini Assorted Danish Pastries**  
**Weight/Quantity:** 30g  
**Case:** 30g X 120pce  
**Code:** **2454**



**Mini Butter Pain au Chocolat**  
**Weight/Quantity:** 25g  
**Case:** 25g X 120pce  
**Code:** **81200**



**Mini Butter Pain au Raisin**  
**Weight/Quantity:** 30g  
**Case:** 30g X 120pce  
**Code:** **810271**



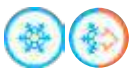
**Royal Danish Pastry Selection**  
**Weight/Quantity :** 77/90g  
**Case:** 77/90g X 36pce  
**Code:** **551171**



**Ind Wrapped Apple Danish Pastry**  
**Weight/Quantity:** 115g  
**Case:** 115g X 24pce  
**Code:** **55501**



**Ind Wrapped Fruit Danish Pastry**  
**Weight/Quantity:** 115g  
**Case:** 115g X 24pce  
**Code:** **555011**



**Gluten Free Brownie Slice**  
**Weight/Quantity:** 85g  
**Case:** 85g X 48pce  
**Code:** **530004**



## Product Catalogue 2026/2027



[www.plasseyfood.ie](http://www.plasseyfood.ie)

 *Love good food?  
Love Plassey Food.*

# Welcome to Plassey Food

## *Welcome to Plassey Food!*

Plassey Food is a 100% Irish, family owned food distribution company, delivering in Munster, Leinster and Connaught, offering a wide range of fresh, frozen and ambient products from our carefully chosen network of producers - both locally, regional, national and international.

## *Meeting the needs of our Customers*

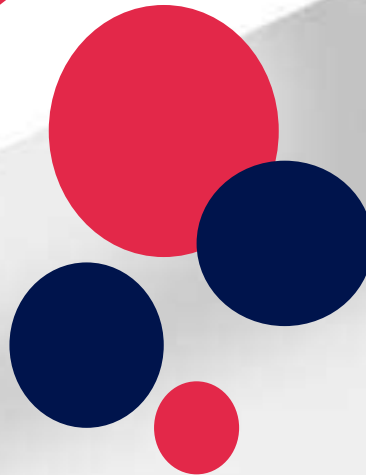
Our fleet of multi-temperature trucks guarantees a professional and efficient service to meet the needs of chefs in hotels, restaurants, bars, catering companies, health care and government institutions, butchers, retailers, education facilities and take-away's.

## *One-Stop Shop*

With 2500 plus products we present ourselves as a "One-Stop Shop" to the foodservice industry.

 *Love good food?  
Love Plassey Food.*





### ***Our Success***

The key to our success is an efficient and well-organised operation and a great team of highly motivated and hard working people who will go the extra mile for our clients and believe in delivering excellence.

### ***Sourcing Products***

If you are looking for a particular product then please contact Plassey Food, call our Telesales staff on (069) 63500 or contact your regional sales representative and we will assist you in your search to find the required product.

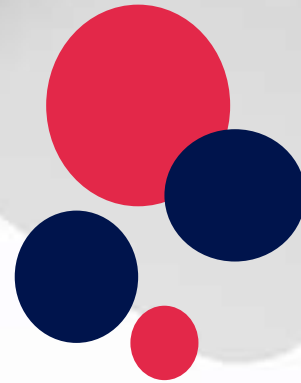
# Customer Service

## *Exceeding our clients' expectations*

Our ultimate goal is to provide our customers, with a quality experience, meeting or exceeding their expectations, with each and every order placed. If you have positive experiences with Plassey Food then please share this with others. However, if your experience with us has not met your expectations, then please let us know.

## *At Plassey Food we love to hear from our customers.*

Please do not hesitate to contact us with any questions, comments and feedback - they are always welcome. Your feedback helps us to improve our organisation and operation. It ensures that we are always delivering the best possible service to you, our customer.



 *Love good food?  
Love Plassey Food.*

## *Supporting Irish*

As a 100% Irish owned family business we truly believe in supporting Irish products from Irish suppliers.




But we also care about supporting the local Irish community by creating employment opportunities and support and serve our clients in the best possible way.



# Allergens

In the EU, if any of 14 major food allergens listed below have been added as deliberate ingredients to pre-packed food products, then they must be displayed on the product label. Of these, peanuts, fish, shellfish, egg, tree nuts, milk and gluten are most relevant for the island of Ireland.

Below you will find food ingredients that must be declared as allergens in the EU.  
Source: The Food Safety Authority of Ireland (FSAI)

-  **Cereals containing gluten**, namely: wheat (such as spelt and khorasan wheat), rye, barley, oats or their hybridised strains, and products thereof, except:
  - wheat based glucose syrups including dextrose
  - wheat based maltodextrins
  - glucose syrups based on barley
  - cereals used for making alcoholic distillates including ethyl alcohol of agricultural origin.
-  **Crustaceans** and products thereof.
-  **Eggs** and products thereof.
-  **Fish** and products thereof, except:
  - fish gelatine used as carrier for vitamin or carotenoid preparations
  - fish gelatine or Isinglass used as fining agent in beer and wine.
-  **Peanuts** and products thereof.
-  **Soybeans** and products thereof, except:
  - fully refined soybean oil and fat
  - natural mixed tocopherols (E306), natural D-alpha tocopherol, natural D-alpha tocopherol acetate, and natural D-alpha tocopherol succinate from soybean sources
  - vegetable oils derived phytosterols and phytosterol esters from soybean sources
  - plant stanol ester produced from vegetable oil sterols from soybean sources.
-  **Milk** and products thereof (including lactose), except:
  - whey used for making alcoholic distillates including ethyl alcohol of agricultural origin
  - lactitol
-  **Nuts**, namely: almonds (*Amygdalus communis* L.), hazelnuts (*Corylus avellana*), walnuts (*Juglans regia*), cashews (*Anacardium occidentale*), pecan nuts (*Carya illinoensis* (Wangenh.) K. Koch), Brazil nuts (*Bertholletia excelsa*), pistachio nuts (*Pistacia vera*), macadamia or Queensland nuts (*Macadamia ternifolia*), and products thereof, except for nuts used for making alcoholic distillates including ethyl alcohol of agricultural origin.
-  **Celery** and products thereof.
-  **Mustard** and products thereof.
-  **Sesame seeds** and products thereof.
-  **Sulphur dioxide and sulphites** at concentrations of more than 10 mg/kg or 10 mg/litre in terms of the total SO<sub>2</sub> which are to be calculated for products as proposed ready for consumption or as reconstituted according to the instructions of the manufacturers.
-  **Lupin** and products thereof.
-  **Molluscs** and products thereof.

**Contact Plassey Food if you have any questions or require more information about allergens information relating to our product range.**



Plassey Food is part of the  
Unitas Wholesale Family

Unitas Wholesale is a new company that has come out of the merger of wholesale buying groups Landmark Wholesale Ltd and Today's Wholesale Services Ltd.

Plassey Food will be part of Unitas Foodservice:

'the Independent Group for Independents'

Turnover of nearly £9bn

Members throughout the UK

Plassey Food is the only member in ROI

 *Love good food?  
Love Plassey Food.*

# Symbols Key



Order before 2pm



Product of Isle of Ireland



Halal product



Frozen product



Oven bake product



Gluten free product



Bake-off product



Deep fry product



Bord Bia Quality Mark



Thaw & serve



Pre-portioned



Lead time required

## DISCLAIMER

All prices in this catalogue are subject to change without notice. Whilst we make every effort to provide you the most accurate, up-to-date information, errors may occur. In the event a product is listed at an incorrect price, Plassey Food shall have the right to refuse or cancel any orders placed for products listed at the incorrect price.